



SoftSummit™ 2015

Assessing Compatibility and Planning for Windows 10



Today's Presenter



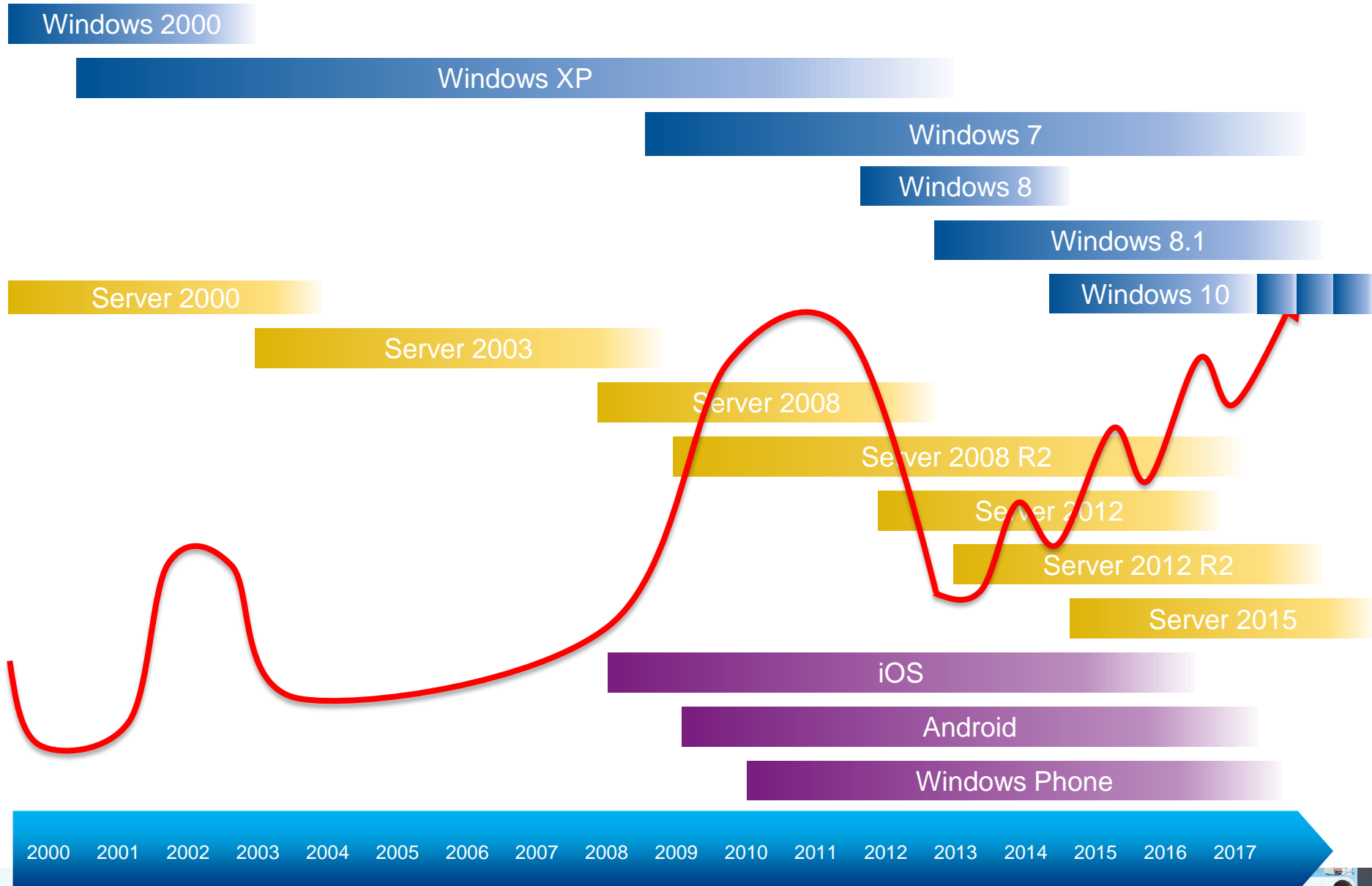
Ken Hilker

Senior Product Manager
Flexera Software

KHilker@flexerasoftware.com

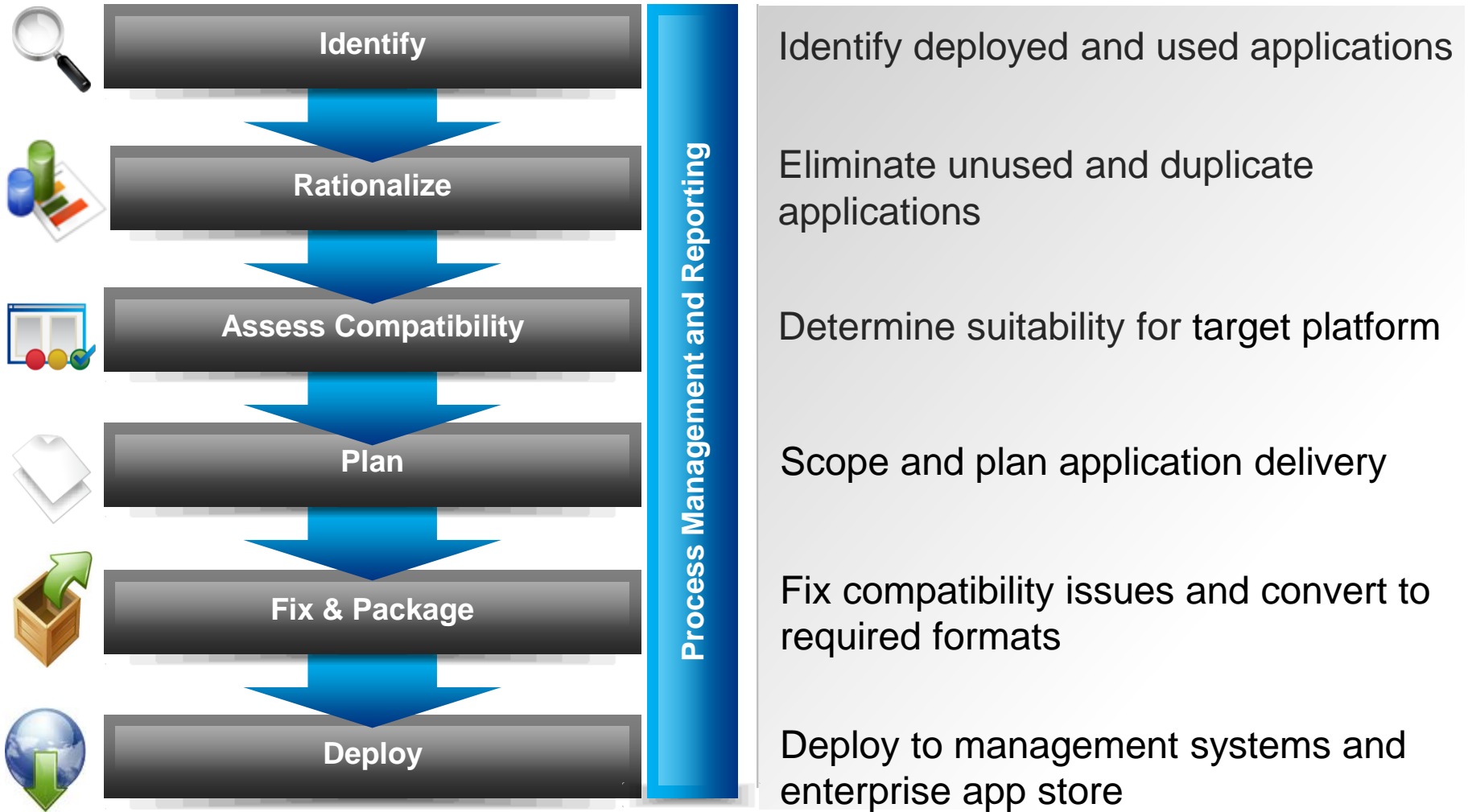


Enterprise adoption of Client Computing Platforms



Process for planning an OS Upgrade

Deliver Consistent and Reliable Applications for All Devices



Are you ready for Win10?

Is your portfolio ready to move?

Rationalized apps

Are your apps compatible?

Desktop
Web
Mobile

Are you ready for Windows as a service?

Process maturity



Rationalize applications

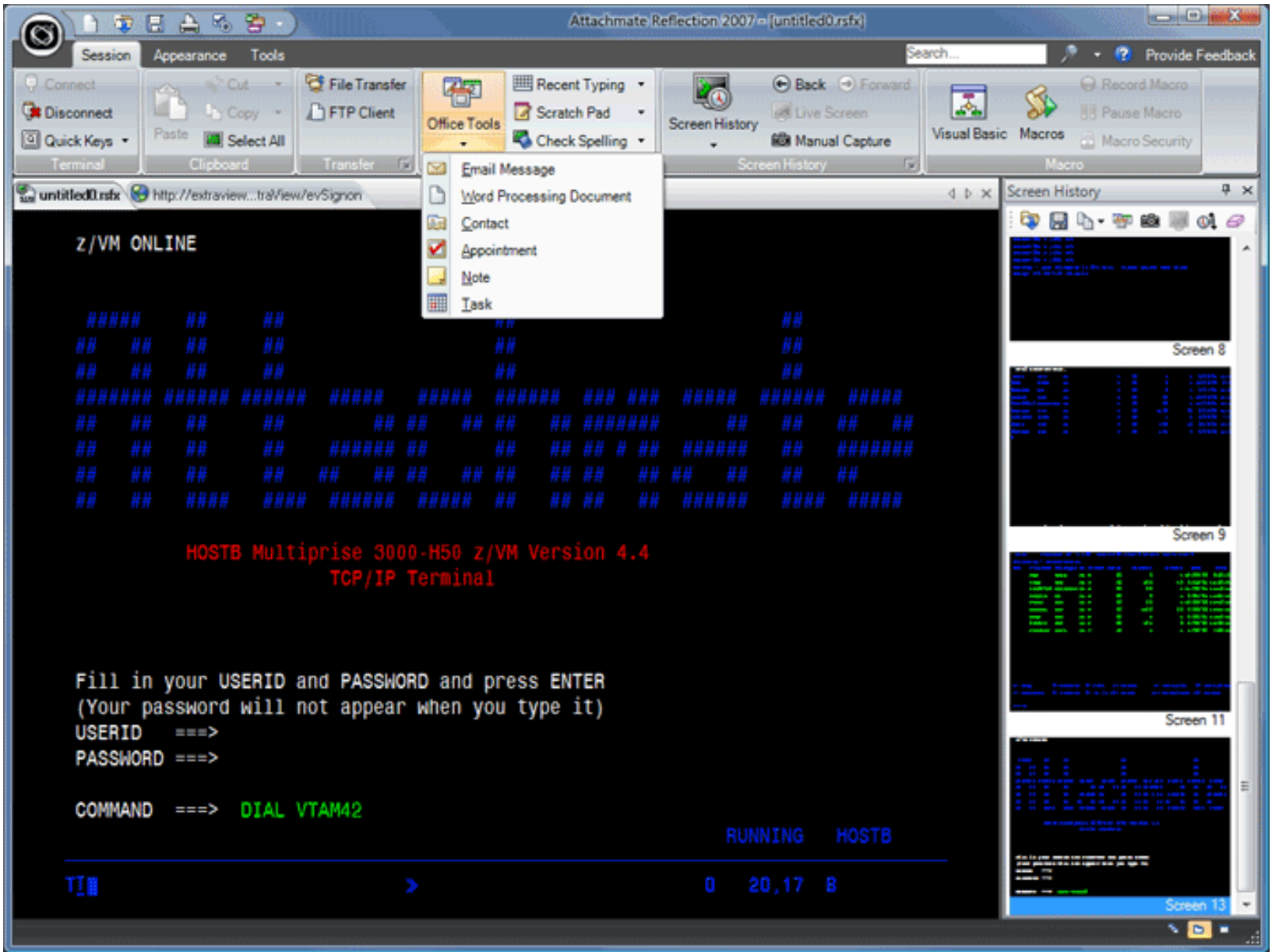
- Determine what your users have and are using today
- Filter out the noise
- Standardize on similar products
- Consolidate multiple versions



Application Compatibility Testing

- Test applications for Windows compatibility
- Test applications for Windows Server, Remote Desktop / Citrix compatibility
- Test applications for suitability with desired virtual formats
- Test mobile apps for compatibility with the latest OS versions
- Test mobile apps for compatibility with the latest devices
- Test mobile apps for compatibility with security policies





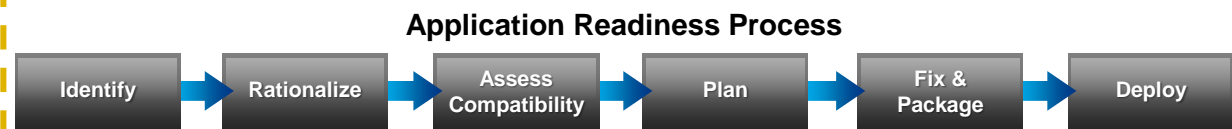
Browser and Web App Upgrades

- Standardize IE versions across the enterprise
 - IE11 supported on Windows 7, Windows 8.1, and Windows 10
 - Will be the only supported version of IE by Jan 12, 2016
 - Native compat settings vs fix web apps
- Prepare for modern browsers
 - Edge
 - Chrome
 - Firefox
 - Safari
 - And more..



Application Readiness Maturity Model

Application Packaging to Predictable Application Delivery

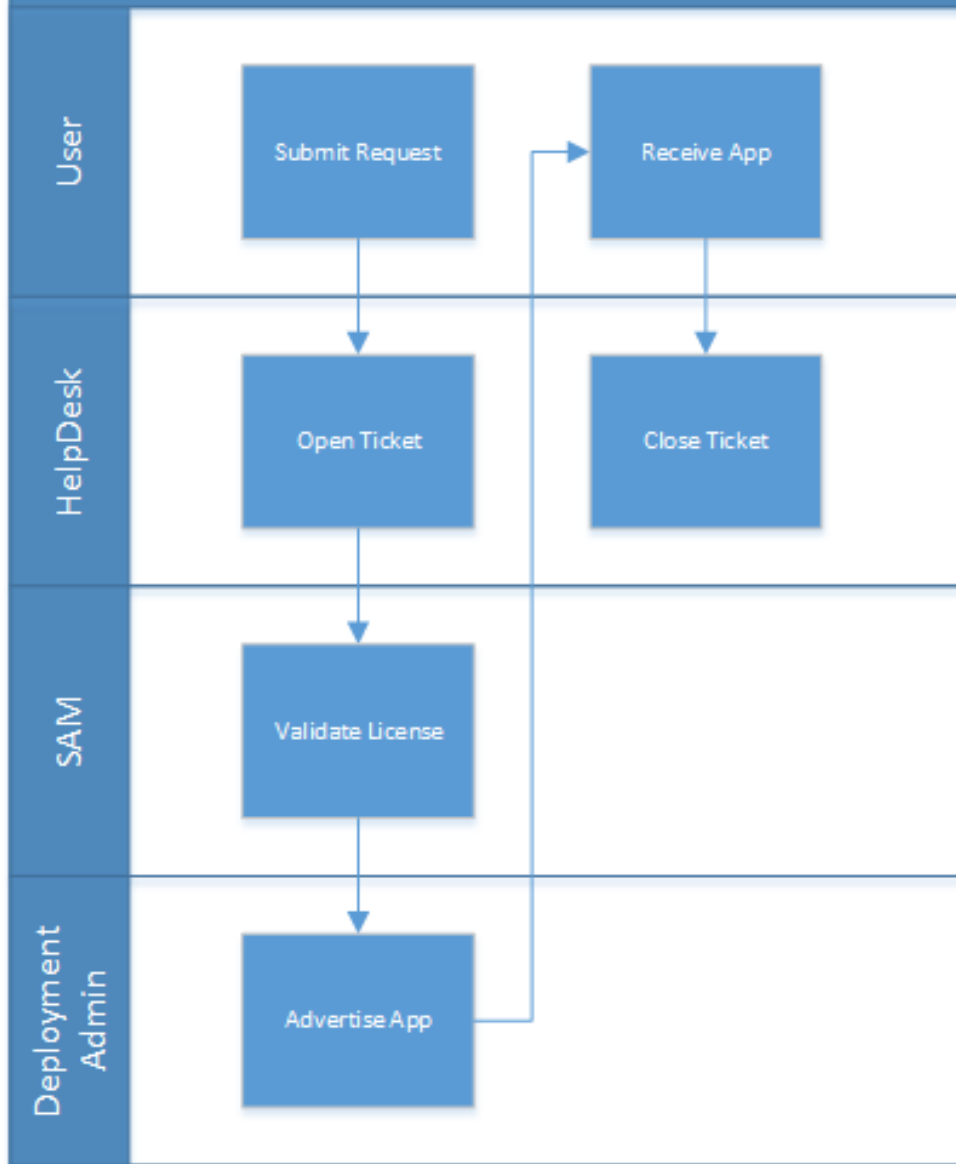


SoftSummit™ 2015

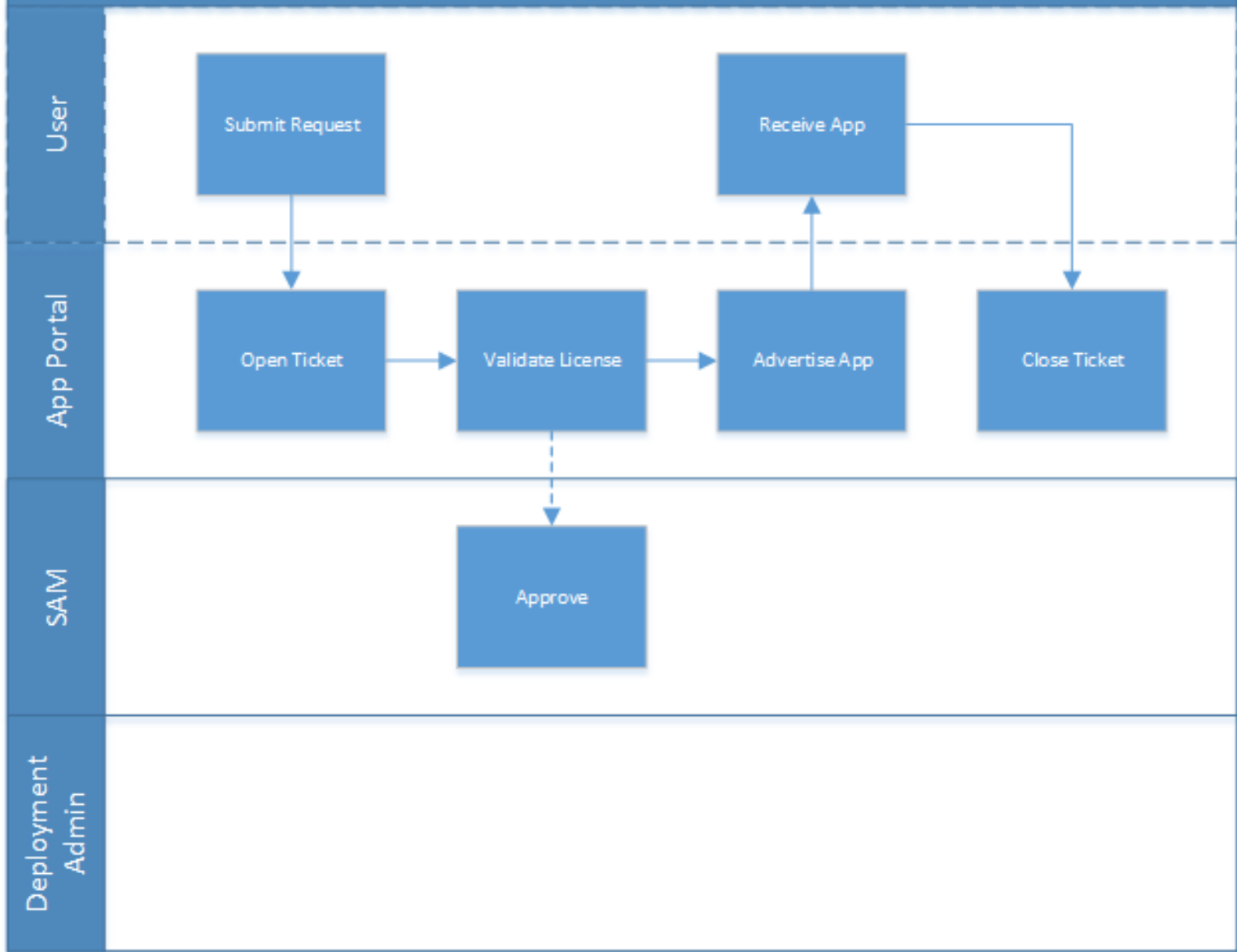
Example



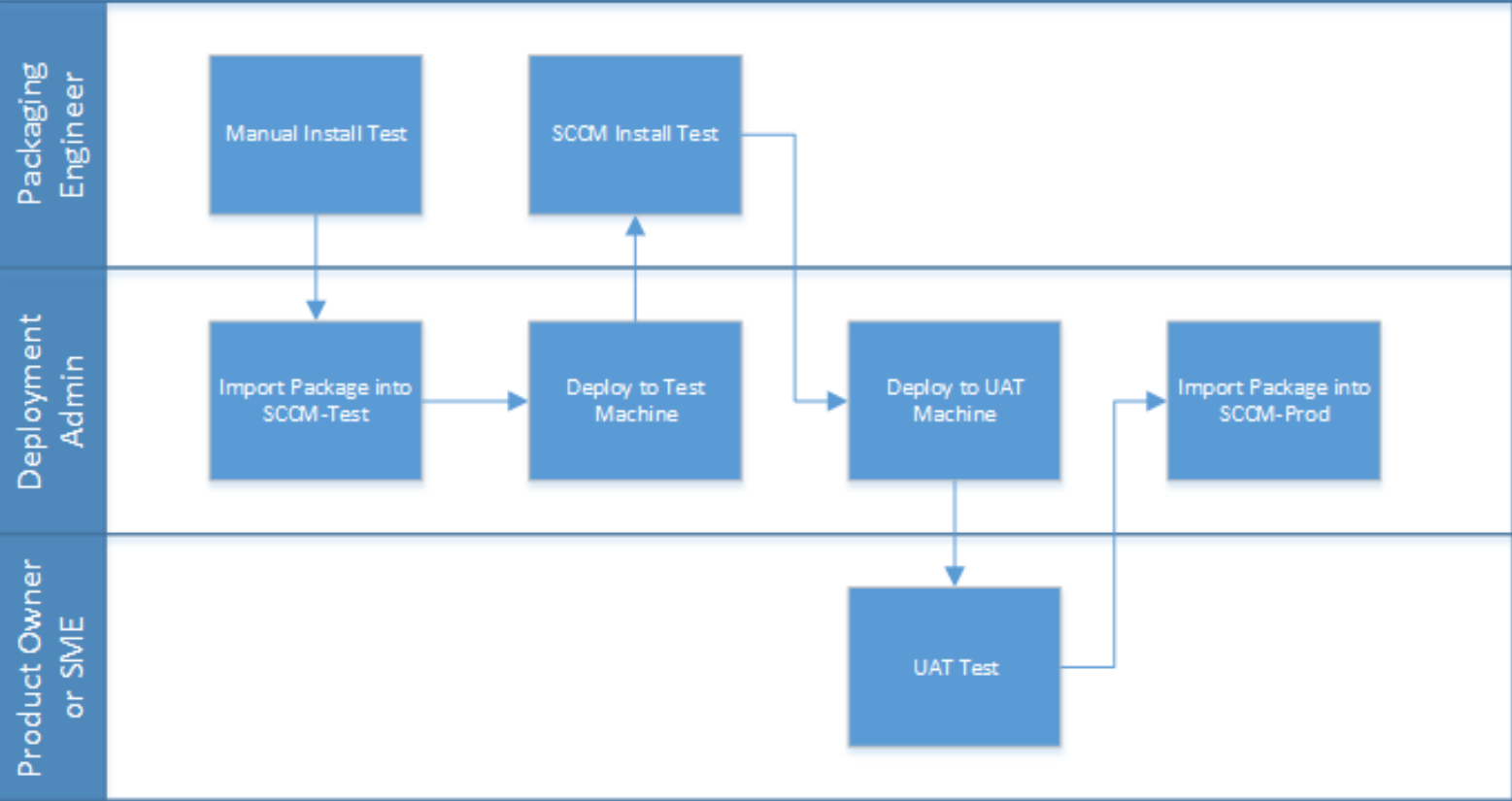
Deployment Request



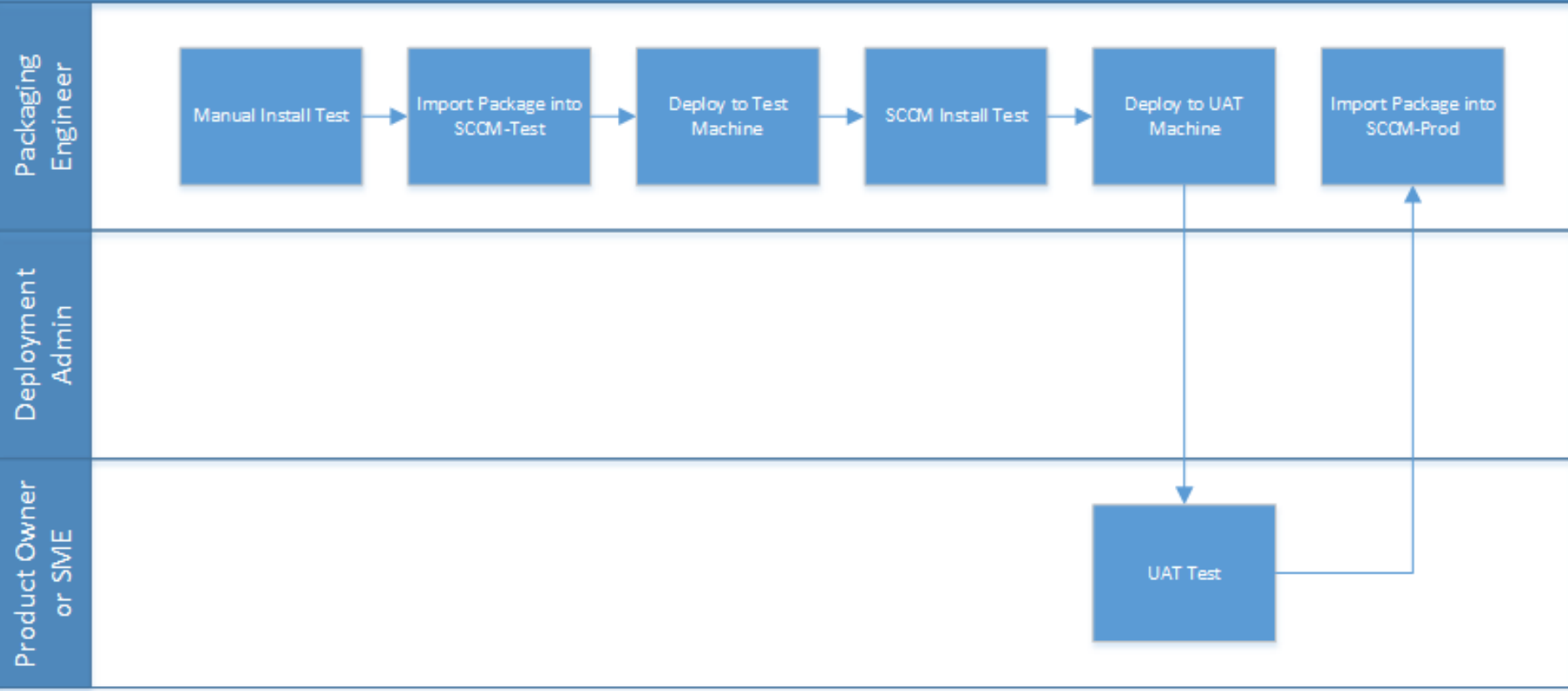
Deployment Request



Publish for Deployment



Publish for Deployment



SoftSummit™ 2015

Thank you!

