

Flexera Software Product Licensing Guide for InstallAnywhere 2010 and Earlier

Flexera Software Product Licensing Guide for InstallAnywhere 2010 and Earlier

Part Number: ISA-1000-LG04

Product Release Date: July 2012

Copyright Notice

Copyright © 2012 Flexera Software LLC. All Rights Reserved.

This product contains proprietary and confidential technology, information and creative works owned by Flexera Software LLC and its licensors, if any. Any use, copying, publication, distribution, display, modification, or transmission of such technology in whole or in part in any form or by any means without the prior express written permission of Flexera Software LLC is strictly prohibited. Except where expressly provided by Flexera Software LLC in writing, possession of this technology shall not be construed to confer any license or rights under any Flexera Software LLC intellectual property rights, whether by estoppel, implication, or otherwise.

All copies of the technology and related information, if allowed by Flexera Software LLC, must display this notice of copyright and ownership in full.

Intellectual Property

For a list of trademarks and patents that are owned by Flexera Software, see <http://www.flexerasoftware.com/intellectual-property>. All other brand and product names mentioned in Flexera Software products, product documentation, and marketing materials are the trademarks and registered trademarks of their respective owners.

Restricted Rights Legend

The Software is commercial computer software. If the user or licensee of the Software is an agency, department, or other entity of the United States Government, the use, duplication, reproduction, release, modification, disclosure, or transfer of the Software, or any related documentation of any kind, including technical data and manuals, is restricted by a license agreement or by the terms of this Agreement in accordance with Federal Acquisition Regulation 12.212 for civilian purposes and Defense Federal Acquisition Regulation Supplement 227.7202 for military purposes. The Software was developed fully at private expense. All other use is prohibited.

Contents

1	Licensing for InstallAnywhere 2010 and Earlier	5
	Concurrent Licensing for InstallAnywhere	6
	Overview of Concurrent Licensing for InstallAnywhere	8
	Installing and Configuring the FlexNet Licensing Server Software on the Licensing Server to Manage Concurrent Licenses of InstallAnywhere	9
	Installing InstallAnywhere and Identifying the FlexNet Licensing Server for a Concurrent License	13
	Using the License Server Manager (Imadmin) on a FlexNet Licensing Server	15
	Launching Imadmin	15
	Importing a License File into Imadmin	17
	Administering a Vendor Daemon	19
	Viewing System Information about the FlexNet Licensing Server	22

Contents

Licensing for InstallAnywhere 2010 and Earlier

This documentation describes licensing-related procedures for InstallAnywhere 2008, 2009, and 2010.

Licensing Options

Two different licensing models are available for InstallAnywhere 2010 and earlier:

- **Node-locked licensing**—With this model, the product license is tied to a specific user and machine. This model is the traditional option and the one that is most often purchased.

If you are using the node-locked type of license, it is your responsibility to maintain your license on your machine. Sharing this type of license between multiple users does not comply with Flexera Software products' end-user license agreements (EULAs).

- **Concurrent licensing**—This model enables sharing or floating of Flexera Software product licenses among multiple users; it is also sometimes called *floating licensing*. Concurrent licensing can provide you with greater flexibility and cost efficiency than the traditional node-locked licensing.

If your organization purchased concurrent licenses for a Flexera Software product, you need to connect your product to the licensing server that you are using. Subsequently, every time that you start a Flexera Software product on your machine, the server is queried to verify that the required license is available. If the license is available, you are granted access to a Flexera Software product. No product activation is required with concurrent licensing.

To learn more about these different licensing models and determine which option best fits your requirements, contact your a Flexera Software sales representative or your preferred reseller.

For instructions on activating your product if you purchased a node-locked license, see your product's documentation. For instructions on setting up the concurrent licensing environment, see [Concurrent Licensing for InstallAnywhere](#).

Concurrent Licensing for InstallAnywhere

If your organization has purchased concurrent licenses of InstallAnywhere 2010 and earlier, a FlexNet Licensing Server that you set up in your environment manages how many instances of the product can be run simultaneously. The following process describes what occurs each time that a user in your organization starts the product.

1. A user launches the product.
2. The FlexEnabled code on the user's machine establishes a connection with the FlexNet Licensing Server and requests a license.
3. The FlexNet Licensing Server checks whether a license is available. If a license is available, the FlexNet Licensing Server checks it out. In addition, the server sends a message to the user's machine. The message grants permission to run the product.
4. The FlexEnabled code on the user's machine receives the message and opens the product.

When the user exits the product, the FlexEnabled code on the user's machine sends a message to the FlexNet Licensing Server, and the license is checked back in, making it available for another machine.

Components of a FlexNet Licensing Server

A FlexNet Licensing Server consists of the following components.

Table 1-1: FlexNet Licensing Server Components

Component	Description
FlexEnabled Product	A FlexEnabled product is one that uses FlexNet Publisher Licensing Toolkit to implement its license models. InstallShield, AdminStudio, and InstallAnywhere are all FlexEnabled products. These FlexEnabled product communicate with the FlexNet Licensing Server to request a license when needed.
License File	A license file (.lic) is a text file that contains a licensing certificate. It contains information about the server machine and vendor daemons. It also contains data about the number of concurrent licenses that were purchased.
License Server Manager	<p>The license server manager on the FlexNet Licensing Server handles the initial contact with FlexEnabled product, passing the connection on to the vendor daemon. The license server manager starts and maintains vendor daemons for serving license rights.</p> <p>Two versions of the license server manager are available:</p> <ul style="list-style-type: none">• ladmin—This is the latest version of the license server manager. This version has a graphical user interface.• lgrd—This is the original version of the license server manager. This version has a command-line interface. <p>The instructions in this document are based on ladmin; however, you can use lgrd to manage concurrent licensing.</p>

Table 1-1: FlexNet Licensing Server Components (cont.)

Component	Description
Vendor Daemon	<p>A vendor daemon is a file that is associated with the vendor who developed the FlexEnabled product. If you are using a FlexNet Licensing Server to manage licenses for InstallShield, AdminStudio, or InstallAnywhere, as well as for products that are developed by other companies and are also FlexEnabled, your FlexNet Licensing Server will have one vendor daemon for Flexera Software, and one additional vendor daemon for each additional vendor.</p> <p>The vendor daemon handles the communication between the FlexEnabled product and the FlexNet Licensing Server; it also keeps track of how many licenses are checked out and who has them.</p>

Note the following about the FlexNet Licensing Server components:

- **Communication via TCP/IP**—InstallShield, AdminStudio, and InstallAnywhere communicate with the vendor daemon through TCP/IP network communications. The products and the daemon processes can run on separate machines on your network, across any size wide-area network.
- **Machine-independent communication**—The format of the traffic between the Flexera Software product and the FlexNet Licensing Server is machine independent, allowing for heterogeneous networks. This means that the FlexNet Licensing Server machine and the machine that is running the Flexera Software product can be different hardware platforms or even different operating systems (for example, UNIX and Windows).
- **Vendor daemon termination scenario**—If the vendor daemon terminates for any reason, all users lose their licenses (though this does not mean that the applications suddenly stop running). Users normally regain their license automatically when the license server manager restarts the vendor daemon; however, they may exit the product if the vendor daemon remains unavailable.

Overview of Concurrent Licensing for InstallAnywhere

The following procedure explains how to set up the concurrent licensing environment for InstallAnywhere 2010 and earlier.



Task **To set up concurrent licensing for InstallAnywhere 2010 and earlier:**

1. Use the Flexera Software [license generator \(http://shop.flexerasoftware.com/LicenseGenerator/default.aspx\)](http://shop.flexerasoftware.com/LicenseGenerator/default.aspx) to download your license file.
2. Install the FlexNet Licensing Server on the machine that you want to use to manage your organization's licenses.
 - For a Windows-based licensing system, download and run [FlexNetLicensingServer.exe \(http://saturn.installshield.com/product/is/2011/domestic/othersetups/flexnetlicensingserver.exe\)](http://saturn.installshield.com/product/is/2011/domestic/othersetups/flexnetlicensingserver.exe), which installs lmadmin, a local Web-based license server manager. The installation will ask you for the license file that you obtained in step 1. For more information, see [Installing and Configuring the FlexNet Licensing Server Software on the Licensing Server to Manage Concurrent Licenses of InstallAnywhere](#).
 - For other operating systems:
 - a. Download and install the [vendor daemon \(http://www.globes.com/pages/mvsndaemon/vddown.htm\)](http://www.globes.com/pages/mvsndaemon/vddown.htm).
 - b. Download and install the appropriate operating system version of [lmadmin or lmgrd \(http://www.globes.com/support/fnp_utilities_download.htm\)](http://www.globes.com/support/fnp_utilities_download.htm), the FlexNet Licensing Server. When you run lmadmin or lmgrd, you need to identify the license file from step 1.
3. Click the appropriate hyperlink in your order confirmation email message to download your Flexera Software product.
4. Install your Flexera Software product and identify the licensing server. To learn how, see Knowledge Base article [Q208841 \(http://support.installshield.com/kb/view.asp?articleid=Q208841\)](http://support.installshield.com/kb/view.asp?articleid=Q208841). This article also explains how to identify the licensing server through the command line and how to specify license timeout settings.
5. If this order is an upgrade for existing concurrent licenses of InstallAnywhere 2008, and if you want to be able to use your existing concurrent license of InstallAnywhere on the same machine that has a concurrent license of the new version of the product, download the following update and install it on your machine:

[InstallAnywhere 2008 Concurrent License Update \(http://saturn.installshield.com/product/ia/ia2008/concurrent/ia-2008-vp1-concurrent.zip\)](http://saturn.installshield.com/product/ia/ia2008/concurrent/ia-2008-vp1-concurrent.zip)

This .zip file contains a `ReadMe.txt` file that explains how to apply the update.

Without this update, the concurrent license for the new product version will prevent you from being able to use existing concurrent licenses of the earlier versions.

For more information on using an upgrade concurrent license, see Knowledge Base article [Q209022 \(http://support.installshield.com/kb/view.asp?articleid=Q209022\)](http://support.installshield.com/kb/view.asp?articleid=Q209022).

Installing and Configuring the FlexNet Licensing Server Software on the Licensing Server to Manage Concurrent Licenses of InstallAnywhere

Once you have obtained the FlexNet Licensing Server software, you can install this software on the machine that you want to use as your licensing server. Configuring a FlexNet Licensing Server for managing concurrent licenses of InstallAnywhere 2010 and earlier requires that you obtain a license file (.lic) from the Flexera Software license generator.

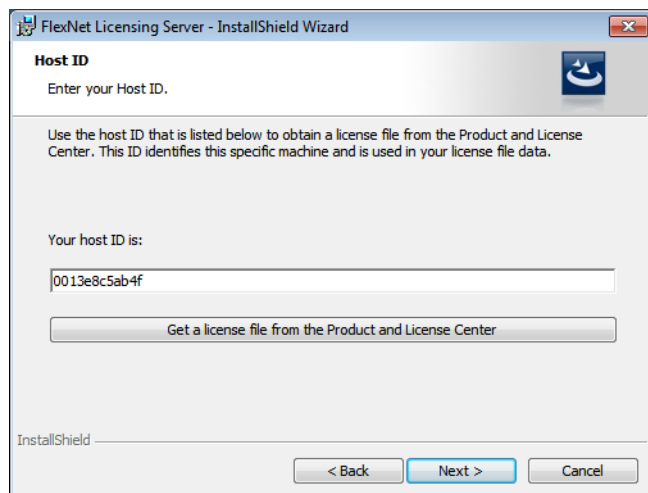
The FlexNet Licensing Server software includes a license server manager (ladmin). The license server manager has a local Web-based user interface that lets you perform tasks such as the following ones:

- Import existing license files.
- Perform all server configuration and most administration functions.
- Add or remove users, and configure their privileges.



Task **To install the FlexNet Licensing Server and obtain a concurrent license file (.lic):**

1. For a Windows-based licensing system, download **FlexNetLicensingServer.exe** (<http://saturn.installshield.com/product/is/2011/domestic/otherstups/flexnetlicensingserver.exe>), which installs ladmin, a local Web-based license server manager.
2. Launch the FlexNet Licensing Server installation (FlexNetLicensingServer.exe).
3. If you have not yet obtained your license file, on the **Host ID** dialog, click the **Get a license file from the Product and License Center** button.



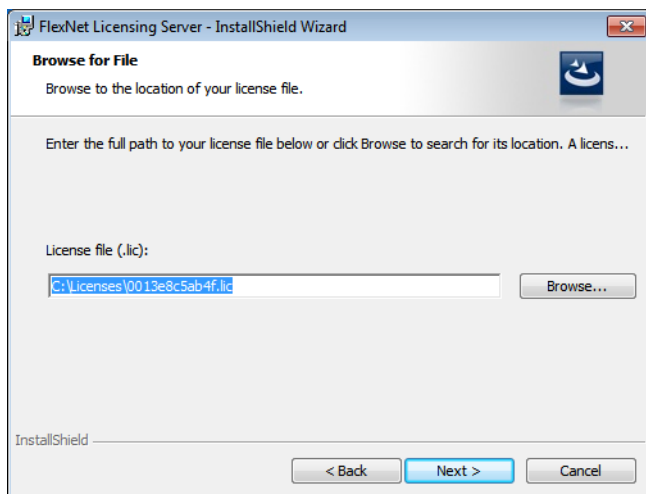
Clicking this button opens a Web page that has a link to the Flexera Software license generator.

- Click the Flexera Software license generator link, complete the form, and click the **Generate** button.

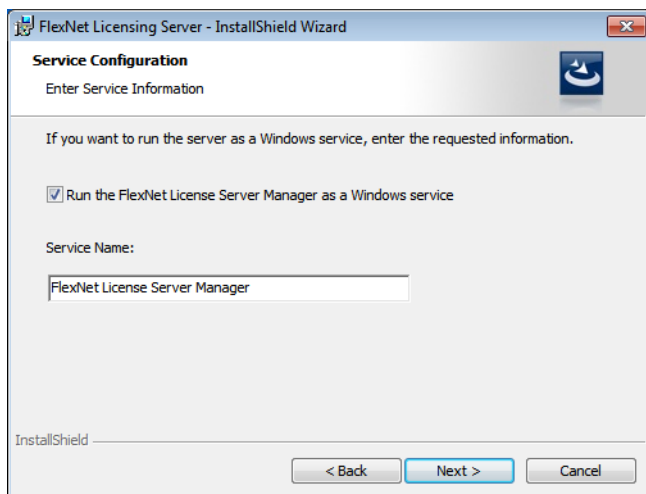


Tip: If you do not have an Internet connection on the machine on which you are installing the FlexNet Licensing Server software, visit the [license generator \(http://shop.flexerasoftware.com/LicenseGenerator/default.aspx\)](http://shop.flexerasoftware.com/LicenseGenerator/default.aspx) on a machine that does have an Internet connection.

- Return to the **Host ID** dialog in the FlexNet Licensing Server installation, and click the **Next** button. The **Browse for File** dialog opens.



- In the **License file (.lic)** box, you can optionally enter the path for the .lic file that you want to use on the current machine, or click the **Browse** button to navigate to the file. If you select an .lic file, the FlexNet Licensing Server uses this file in its current location; the file is not copied to a new location or renamed. Note that you can later use the license server manager (ladmin) to add license files to the FlexNet Licensing Server.
- Click the **Next** button. The **Service Configuration** dialog opens.

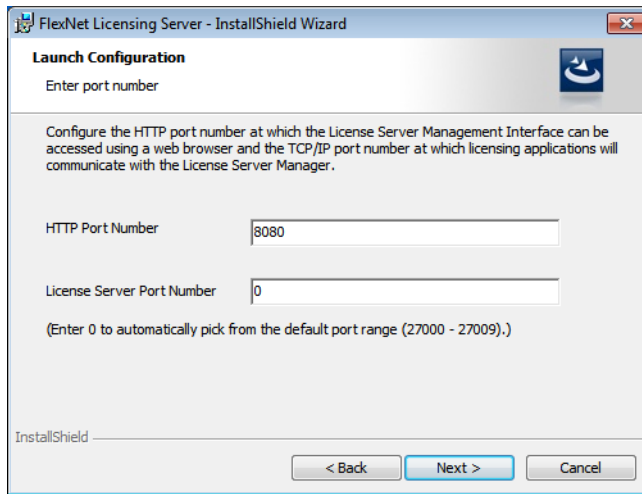


8. If you want to run the FlexNet Licensing Server as a Windows service, select the check box, and enter the name that you would like to use for the service.



Important: To achieve the highest level of availability, it is recommended that you choose to run the FlexNet License Server Manager as a Windows service. If it is run as a Windows service and the FlexNet Licensing Server machine needs to be restarted, the service is also restarted. Therefore, no manual intervention is needed to make the FlexNet Licensing Server available again to users or machines who try to check out licenses.

9. Click the **Next** button. The **Launch Configuration** dialog opens.



10. In the **HTTP Port Number** box and the **License Server Port Number** box, enter the appropriate port numbers. It is recommended that you leave the default values for these boxes.

The HTTP port number is used to host a Web server for monitoring which licenses are in use and which machines are using them.

The license server port number is used for communication between the vendor daemon on the FlexNet Licensing Server and FlexNet Enabled products (InstallShield, AdminStudio, and InstallAnywhere).

11. Complete the remaining dialogs in the installation. The last dialog has a check box that lets you indicate whether you want to launch the FlexNet License Server Manager Web application, which is the license server manager (ladmin).

The installation installs the FlexNet Licensing Server on your machine. If you selected the check box on the last dialog, the installation launches the license server manager.

To test to see if the server is running, open a Web browser on the machine on which you ran the installation and go to the following URL (but substitute the appropriate port number in place of *PortNumber*):

<http://localhost:PortNumber/>

You can also visit this portal from another machine by going to the following URL. Note that your machine's firewall settings may need to be modified in order to access this site.

<http://MachineName:PortNumber/>

MachineName is the name of the machine that has the FlexNet Licensing Server software. *PortNumber* is the port number that you entered in the installation; 8080 is the default port number.



Important: In many organizations, the person who sets up the FlexNet Licensing Server to manage concurrent licenses is not the same person who installs and uses InstallShield, AdminStudio, or InstallAnywhere. If this is the case in your organization, ensure that you inform users of the product the following information, since they will need to know it when they install the product and connect to the FlexNet Licensing Server:

- Name or IP address of the server on which the FlexNet Licensing Server software was installed
- License server port number that you entered on the Launch Configuration dialog (In most cases, this value is left blank. If you leave this blank, inform users of the product that they should leave the port number setting in the product installation blank.)

To learn how to use the License Server Manager (lmadmin), see [Using the License Server Manager \(lmadmin\) on a FlexNet Licensing Server](#).

Using a Non-Windows-Based System for the FlexNet Licensing Server

The aforementioned procedure explains how to install and configure the FlexNet Licensing Server on a Windows-based system. If you would like to use a machine that has an operating system other than Windows as your FlexNet Licensing Server, download the appropriate installation from the following site:

http://www.globes.com/support/fnp_utilities_download.htm

If you use one of the FlexNet Licensing Server installations that is posted on that page, download the appropriate mvsn vendor daemon from the following site. Different vendor daemon files are available for different operating systems.

<http://www.globes.com/pages/mvsndaemon/vddown.htm>

If you are using lmadmin, copy the mvsn vendor daemon to the same folder that contains the lmadmin.exe file that was installed by the FlexNet Licensing Server software installation. Then import the concurrent license file into the FlexNet Licensing Server software. For instructions on how to do this, see [Importing a License File into lmadmin](#).

If you are using lmgrd, pass the location of the mvsn vendor daemon to lmgrd from the command line. Then import the concurrent license file into the FlexNet Licensing Server software. If applicable, copy the InstallAnywhere concurrent license file (.lic) along with any other concurrent licenses files that you want to be managed by the FlexNet Licensing Server to the same directory. Next, launch lmgrd from the command line. On a Windows-based machine, use the following command line:

```
lmgrd.exe -c PathToDirectoryOfLicenseFiles
```

On a non-Windows-based system, use the following command line:

```
lmgrd -c PathToDirectoryOfLicenseFiles
```

Installing InstallAnywhere and Identifying the FlexNet Licensing Server for a Concurrent License

If your organization purchased concurrent licenses for InstallAnywhere 2010 and earlier, your organization must first set up the FlexNet Licensing Server. Once that has been done, you need to identify the FlexNet Licensing Server that you are using on the machine where you install InstallAnywhere.

For instructions on how to do this, see Knowledge Base article [Q208841 \(http://support.installshield.com/kb/view.asp?articleid=Q208841\)](http://support.installshield.com/kb/view.asp?articleid=Q208841). This article also explains how to identify the licensing server through the command line and how to specify license timeout settings.

If you purchased an upgrade for existing concurrent licenses of InstallAnywhere 2008, and if you want to be able to use your existing concurrent license of InstallAnywhere on the same machine that has a concurrent license of the new version of the product, download the following update and install it on your machine:

[InstallAnywhere 2008 Concurrent License Update \(http://saturn.installshield.com/product/ia/ia2008/concurrent/ia-2008-vp1-concurrent.zip\)](http://saturn.installshield.com/product/ia/ia2008/concurrent/ia-2008-vp1-concurrent.zip)

This .zip file contains a ReadMe.txt file that explains how to apply the update.

Without this update, the concurrent license for the new product version will prevent you from being able to use existing concurrent licenses of the earlier versions.

For more information on using an upgrade concurrent license, see Knowledge Base article [Q209022 \(http://support.installshield.com/kb/view.asp?articleid=Q209022\)](http://support.installshield.com/kb/view.asp?articleid=Q209022).

Using the License Server Manager (ladmin) on a FlexNet Licensing Server

The FlexNet Licensing Server software includes a license server manager (ladmin). The license server manager has a local Web-based user interface that lets you perform tasks such as the following ones:

- Import existing concurrent license files for InstallShield, AdminStudio, InstallAnywhere, and the InstallShield Standalone Build.
- Perform all server configuration and most administration functions.
- Add or remove users, and configure their privileges.

To see detailed information on how to use ladmin, see the documentation that is displayed when you click the Help button in the upper-right corner of this site.

Launching ladmin

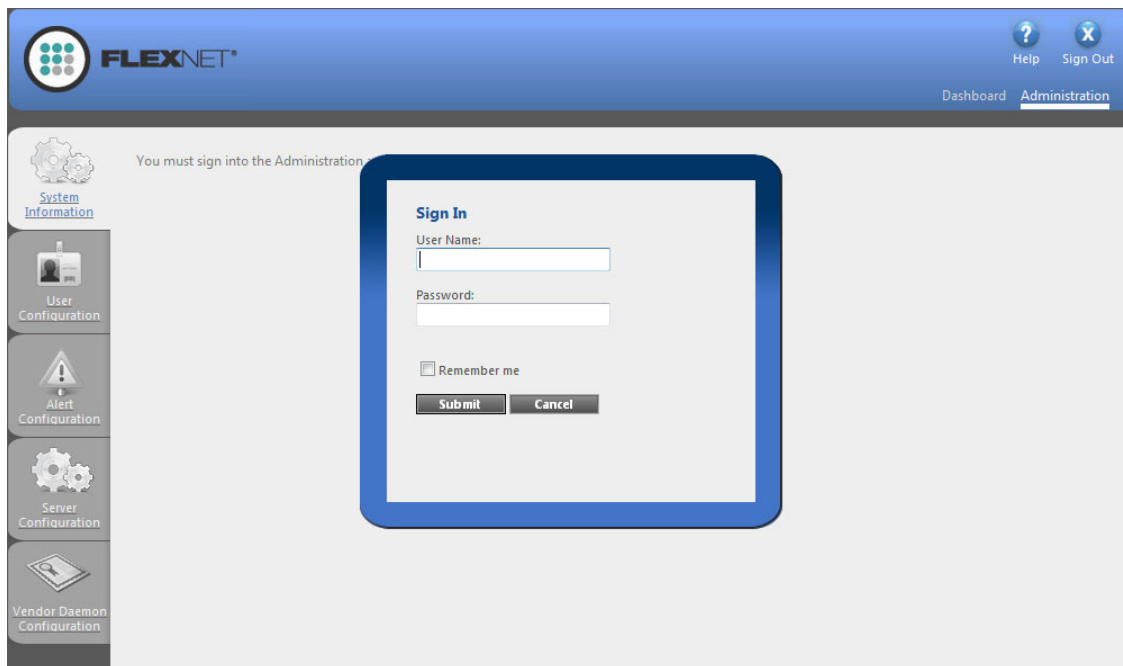
You can launch ladmin and sign in to it regardless of whether you are using the machine that has the FlexNet Licensing Server or a different machine in your organization.



Task **To launch ladmin:**

1. Open a Web browser and do one of the following:
 - If you are using the machine that has the FlexNet Licensing Server, visit the following site:
`http://localhost:Port`
Port is the HTTP port number that is used to host the Web server; this is configured when the FlexNet Licensing Server software is installed. The default port number is 8080.
 - If you are using a different machine (one that is not your FlexNet Licensing Server), visit the following site:
`http://MachineName:Port`
MachineName represents the name of the machine that has the FlexNet Licensing Server software. *Port* is the HTTP port number that is used to host the Web server; this is configured when the FlexNet Licensing Server software is installed. The default port number is 8080.

2. In the upper-right corner of the site, click the **Administration** link. The site displays the **Sign In** page.



3. Sign in. The default sign-in information is as follows. If this is the first time that you are signing in with these credentials, lmadmin prompts you to change the password.
 - User Name: admin
 - Password: admin



Tip: If the FlexNet Licensing Server is configured to run as a service, you can start the FlexNet Licensing Server service by using the Windows Services administrative tool. If the FlexNet Licensing Server is not configured to run as a service, you can start it by running `lmadmin.exe`. The FlexNet Licensing Server must be started in order to allow users to check out and check in licenses.

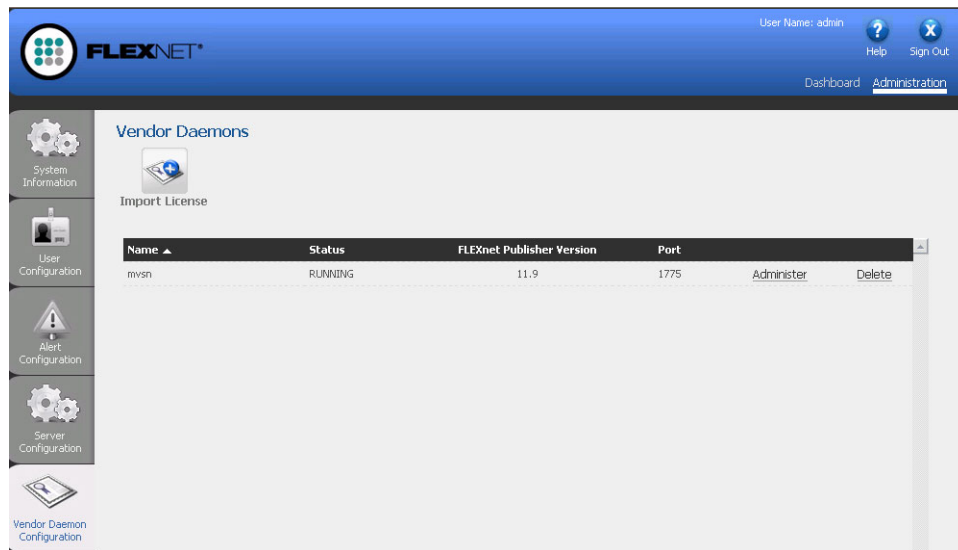
Importing a License File into Imadmin

The Vendor Daemon Configuration page in Imadmin enables you to import license files for a vendor daemon.

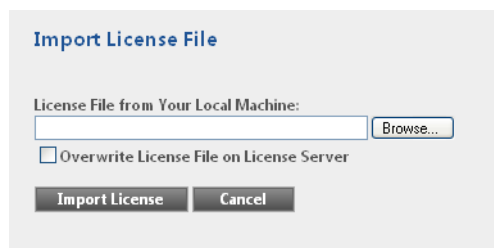


Task To import a license file for an existing vendor daemon:

1. Click the **Administration** link, and then click the **Vendor Daemon Configuration** tab.



2. Click the **Import License** button. The **Import License File** page opens.



3. Specify the path to the license file (.lic) that you want to use, or click the **Browse** button to navigate to it.
4. Optionally, select the **Overwrite License File on License Server** check box. If a license file exists in the upload directory on the licensing server with the same name, the licensing server will overwrite that file. This option should not be required when you are adding a new vendor daemon to the license server manager.
5. Click the **Import License** button. If this is a license file for an existing vendor, the license server manager copies the file to the appropriate directory on the licensing server.

6. If you are importing a license file for an existing vendor and you cleared the **Overwrite License File on License Server** check box, you must stop and start the vendor daemon. The new license file is read, and the licenses it contains are loaded when the vendor daemon is started.

If you imported a license file for an existing vendor and you selected the Overwrite License File on License Server check box, the updated license file is reread automatically by the vendor daemon; users can begin using any new licenses once this reread has completed. The new licenses are also displayed on the Dashboard.

If you imported a license file for a new vendor, the license server manager adds the vendor daemon information to the license server configuration file so that the licensing server can manage it. The license server manager copies the file to the appropriate directory on the licensing server.

Administering a Vendor Daemon

The Vendor Daemon Configuration page in lmadmin enables you to stop a vendor daemon, start a vendor daemon, and reread a license file for a vendor daemon.



Task To administer a vendor daemon:

1. Click the **Administration** link, and then click the **Vendor Daemon Configuration** tab.

The screenshot shows the FlexNet Administration web interface. The top navigation bar includes the FlexNet logo, the user name 'admin', and links for 'Help' and 'Sign Out'. Below the navigation bar, there are tabs for 'Dashboard' and 'Administration'. The main content area is titled 'Vendor Daemons' and features an 'Import License' button. A table lists the configured vendor daemons:

Name	Status	FLEXnet Publisher Version	Port	Administer	Delete
mvsn	RUNNING	11.9	1775	Administer	Delete

A left-hand sidebar contains navigation icons for 'System Information', 'User Configuration', 'Alert Configuration', 'Server Configuration', and 'Vendor Daemon Configuration'.

2. In the vendor daemon summary grid, click the **Administer** hyperlink. Several settings are displayed.

The screenshot shows the 'Vendor Daemon: mvsn' configuration page. At the top, it displays 'Vendor Daemon Port in Use: 1775'. Below this is the 'Vendor Daemon Actions' section with buttons for 'Stop' and 'Reread License Files'. A 'Report Log Name' field is followed by a 'Rotate Report Logs' button. The 'General Configuration' section includes a 'License File or Directory' field with the path 'C:\Documents and Settings\Debbielanders\My Documents\LicenseFiles\0004232c4c1f.lic'. The 'Vendor Daemon Location' field contains 'mvsn/mvsn'. Under 'Vendor Daemon Port', the 'Use default port' radio button is selected. The 'Restart Retries' field is set to '3'. There is an unchecked checkbox for 'Enable Date-based Versions'. At the bottom, there is a 'Vendor Daemon Log' section and 'Save' and 'Cancel' buttons.

3. Use the following settings to perform the required tasks.
 - **Vendor Daemon Port in Use**—This read-only setting displays the TCP/IP port number that the vendor daemon uses for communication with FlexEnabled applications.
 - **Stop**—This button stops the vendor daemon but leaves lmadmin running. When you stop a vendor daemon, this button changes to Start.
 - **Start**—This button starts the vendor daemon. This button is displayed only if the vendor daemon is stopped. When you start the vendor daemon, the vendor daemon reads the license files to load the license rights into memory. When you start a vendor daemon, this button changes to Stop.
 - **Reread License Files**—This button rereads the contents of the license files, trusted storage, and any vendor daemon options file and then loads the information into memory. The license files that are specified in the License File or Directory setting in the General Configuration section are reread, unless the value of the License File or Directory setting has been changed when a restart of the vendor daemon is required. Typically this button is used when the content of the license file or options file has been edited.

- **Report Log Name**—Enter the name of the file in which to save the current report log.
- **Rotate Report Logs**—When you click this button, the FlexNet Licensing Server renames the existing report log to the name in the Report Log Name setting and creates a new empty report log file using the name in the options file. To use this capability, you must enable report logging using the options file.

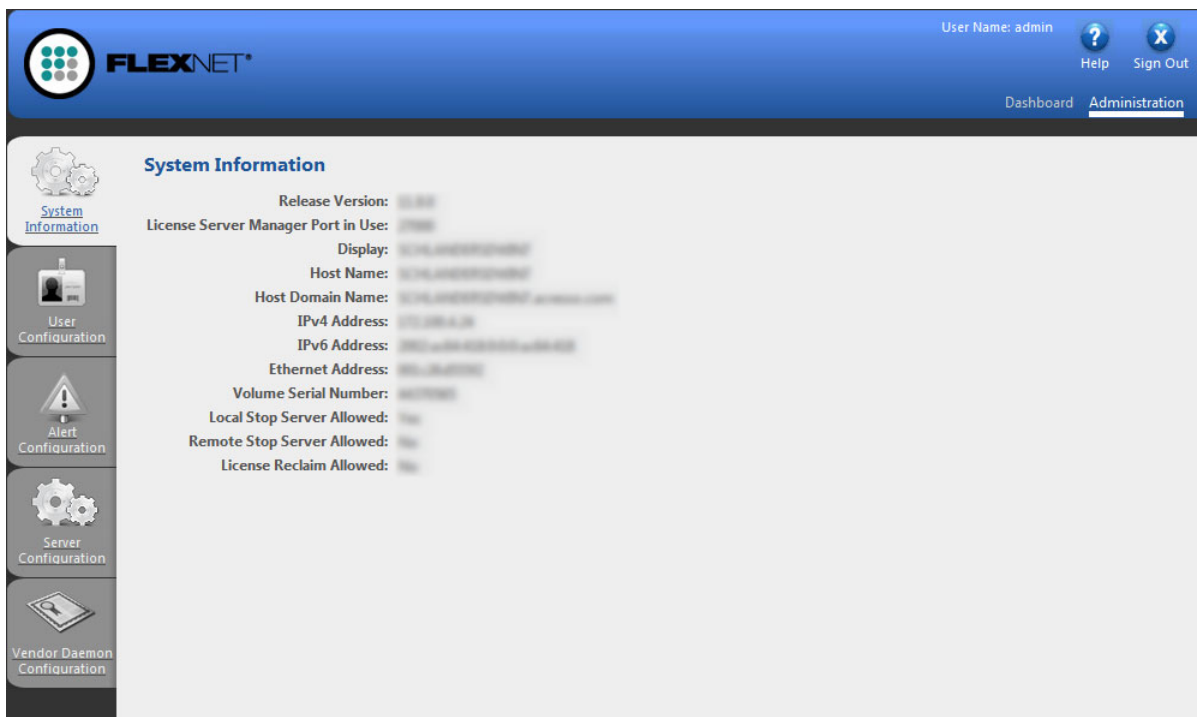
Viewing System Information about the FlexNet Licensing Server

The license server manager (Imadmin) shows information about the FlexNet Licensing Server and the system that is running the FlexNet Licensing Server software.



Task To view system information in Imadmin:

Click the **Administration** link, and then click the **System Information** tab.



The System Information tab shows the following information:

- **Release Version**—Release version of the FlexNet Licensing Server.
- **License Server Manager Port in Use**—Port number that the Imadmin uses to listen for communication. To configure the port number, use the Server Configuration tab.
- **Display**—On Windows-based systems, this is the system name or the terminal server client name (in a terminal server environment). On UNIX-based systems, this is the X-Display name or the value that is returned by the `ttyname()` (or comparable) function.
- **Host Name**—The host name of the system where the FlexNet Licensing Server is running (for example, **prod01**).
- **Host Domain Name**—The fully qualified host name of the system on the domain where the licensing server is running (for example, **prod01.flexerasoftware.com**).

- **IPv4 Address**—IP version 4 address that is used to identify the system (for example, **255.255.255.255**). The IPv4 address is shown when the system has IPv4 enabled.
- **IPv6 Address**—IP version 6 address that is used to identify the system (for example, **ffff:ffff:ffff:ffff:ffff:ffff:ffff:ffff**). The IPv6 address is shown when the system has IPv6 enabled.
- **Ethernet Address**—The machine's host ID (which is the MAC address of the machine and is also called the physical address) that identifies the system where the FlexNet Licensing Server software is running.
- **Volume Serial Number**—The hard disk serial number that identifies the system where the licensing server is running.
- **Local Stop Server Allowed**—Indicates whether you can stop the FlexNet Licensing Server using the `lmdown` utility running on the machine where the FlexNet Licensing Server is running (the local machine) or from the license server management interface. To configure this setting, use the `-allowStopServer` command-line parameter when you run the `lmadmin`.
- **Remote Stop Server Allowed**—Indicates whether you can stop the FlexNet Licensing Server.

If No is selected, you cannot stop the FlexNet Licensing Server from a remote machine using `lmdown` or the license server management interface.

If Yes is selected, you can stop the FlexNet Licensing Server using either of the following methods:

- Use `lmdown` from a remote machine—that is, a machine other than the one on which `lmadmin` is running.
- Click the Stop Server button on a license server management interface that is running on a remote machine.
- **License Reclaim Allowed**—Indicates whether you can use the `lmremove` utility to reclaim a license from a user. To configure this setting, use the `-allowLicenseReclaim` command line parameter when you run `lmadmin`.

If you configured the licensing server for three-server redundancy, the Three-Server Redundancy Group Information section on the System Information tab shows the following information:

- **Quorum State**—This is the state of the quorum. As the licensing server starts up and attempts to establish a quorum, the following states are set in the order listed:
 - **None**—The licensing server is not configured for three-server redundancy.
 - **Initialize**—A quorum is being initialized.
 - **Wait**—The initialization phase is complete, but a quorum has not yet been established.
 - **Confirm**—The FlexNet Licensing Server is waiting for a confirmation message from at least one other FlexNet Licensing Server before the quorum is established.
 - **Up**—At least two licensing servers have established a quorum.
- **Master**—This is the host name of the Master.
- **Primary Is Master**—Indicates either True or False, specifying whether the `PRIMARY_IS_MASTER` attribute is defined in the license file.
- **Group Member Host**—The host names of the three systems that are configured in the license file.

- **Port**—Port number of each system that is displayed in Group Member Host column.
- **Status**—Status of each system in the Group Member Host column. As each FlexNet Licensing Server joins the quorum, it has one of the following statuses.
 - **None**—The FlexNet Licensing Server is not a member of the quorum.
 - **Active**—The FlexNet Licensing Server is an active member of the quorum.
 - **Connected**—The FlexNet Licensing Server has connected to the quorum.
 - **Connection Failed**—The FlexNet Licensing Server attempted to connect to another FlexNet Licensing Server, but it failed.
 - **In Process**—The FlexNet Licensing Server is attempting to connect with another FlexNet Licensing Server to establish a quorum.
 - **Initialize**—The FlexNet Licensing Server is being initialized as part of the quorum.
 - **Sent**—The FlexNet Licensing Server sent a message to another FlexNet Licensing Server in the quorum.